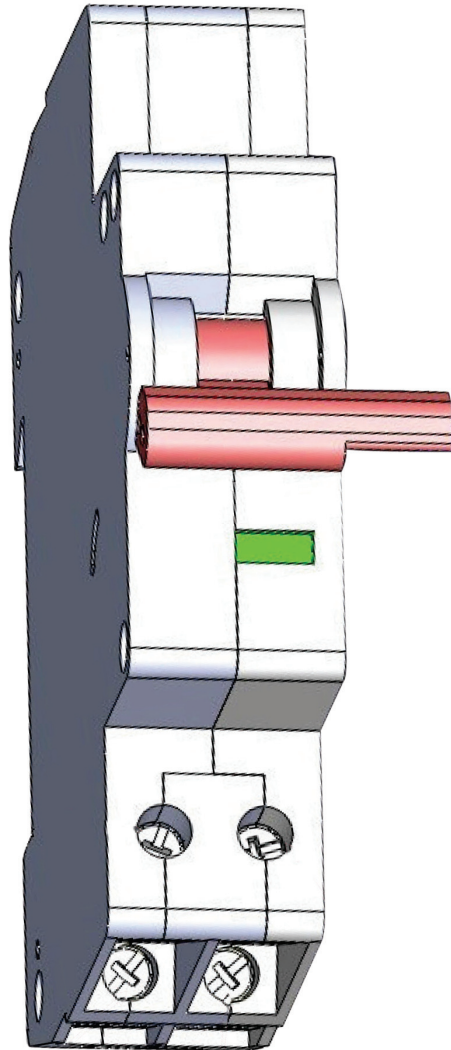


# Smoke Detector safety System

Model: SSP-1



**INSTRUCTION MANUAL**



N13275

# Contents

- 01 **Description**
- 02 **Important Warnings**
- 03 **Installation Instructions**
- 04 **Technical Specifications**

# Description

The Smoke Detector Safety Switch is specifically designed to protect both people and property from damage or injury in case of a particle fire by monitoring the hard wired smoke alarm activity via the interconnect terminal on the smoke detector.

- SSP-1 must be linked up to chosen c/b via physically linking the drive arm, as per Fig.2 (page 3).
- Active (A) and neutral (N) must be wired with the correct polarity.
- In 2-3 phase installations the same phase must be used on the SSP-1 as the hard wired smoke alarms.
- A minimum cable size of 1mm must be used.
- A maximum of 10 hard wired smoke detectors may be connected to the SSP-1.

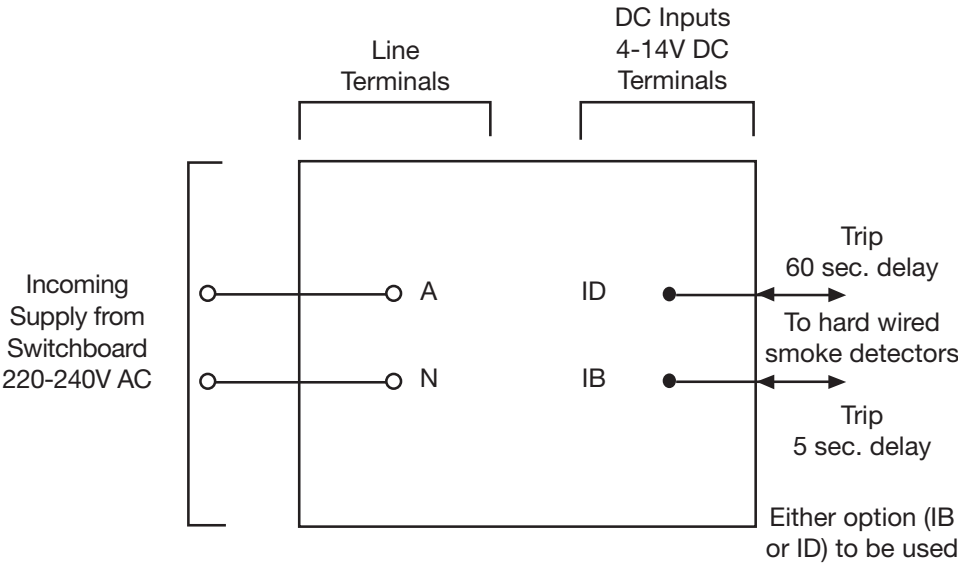
# Important Warnings

When installing and operating the Smoke Detector Safety Switch, the following must be observed and complied with:

- The unit must be properly installed by a qualified electrician and in accordance with the detailed instructions in this manual.
- The unit must be tested and reset at least once a month.
- The unit must never exceed 4 test and reset operations per minute.
- The protection device must not be tampered with or repaired by anyone other than the manufacturer.
- The unit must not have LINE conductors connected to the DC input terminals.
- This product should not be seen as a replacement for safe electrical practices.

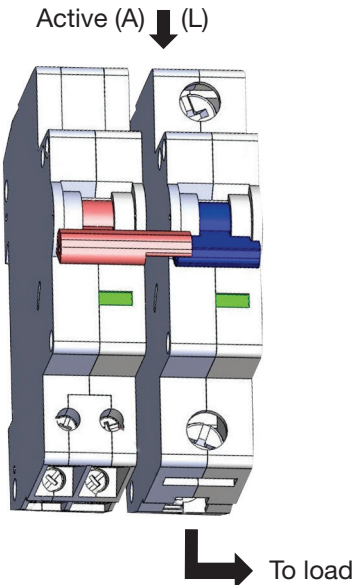
# Installation Instructions

Figure 1: Wiring Diagram



**Warning:** DO NOT connect incoming supply cables to the DC input terminals as this will result in damage to the SSP-1.

Figure 2



# Technical Specifications

Nominal Operating Voltage	220-240VAC
Nominal Operating Frequency	50Hz
Max. No. Smoke Detectors	10
Circuit Protection Required	Inc 3kA circuit protection by MCB or HRD fuse, 20A max.
<b>General Specifications</b>	
Operating Temperature Range	-10 to 40°C
Operating Humidity Range	10 to 90% RH
Mounting Centres	DIN Rail
Complaint Standard	IEC 60335-1:2010
EMC Emission Compliance	EN 61000-6-3:2007+A1:2011 EN61000-3-2:2006+A1:2009+A2:2009 EN 61000-3-3:2008 EN 61000-6-1:2007
Specifications typical @ 25°C ± 5°C	
No user serviceable parts inside.	

# Notes

